

Challenges in data collection of Thailand Population and Housing Census 2025 to be able to complement the CRVS work in Thailand

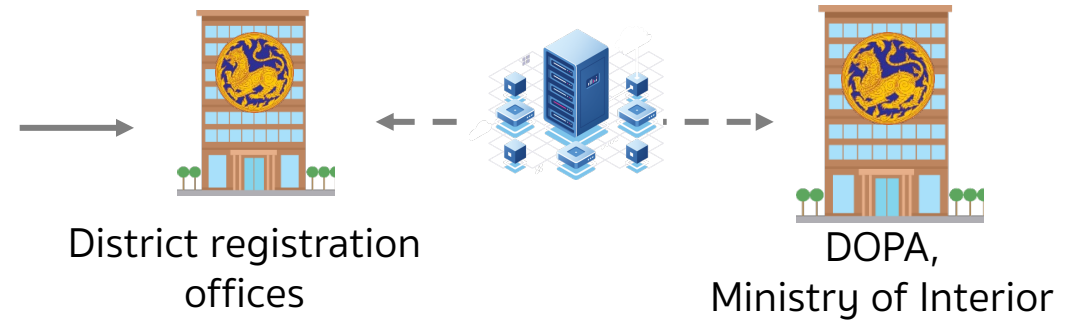
Wichan Choorat
Director of Demographic and Population Statistics Group,
Social Statistics Division

Civil Registration System of Thailand

- record vital events
 - Births
 - Deaths
 - Marriages
 - **Relocation**
 - House registration



Head of the household / family members



History of Thailand's Population and Housing Census



First Population Census
in 1909

1919, 1929, 1937, and 1947



Ministry of Interior



NSO has been responsible for conducting
the Population and Housing Census
since 1960

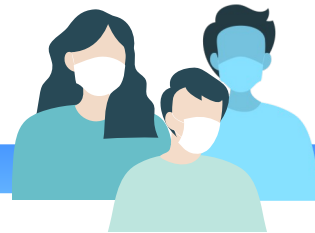


หนึ่งร้อยมีสามะโนประชากรประเทศไทย
สำนักงานสถิติแห่งชาติ

The 100th Anniversary
of the Population Census” in 2000,
and the 5th round of
housing census in Thailand



The next population and
housing census
will be conducted in 2025 by
using digital-first approach



The 2020 Population and
Housing census was
postponed due to the
coronavirus outbreak

Coverage

The coverage of the population and the residence where the population lives are as follows

Population in coverage:

- All Thais citizens residing in Thailand on the Census day;
- Thais/Non-Thais who usually live in Thailand but temporarily be outside the country on the Census Day;
- All military servants, defenses, civil servants, and Thai diplomats, including their families, of which their stations were outside of Thailand
- **Non-Thais** who reside in Thailand at least three months prior to the Census Day

Population not coverage:

- Non-Thais military servants, defenses, civil servants, and diplomats, including
- Their families, of which their stations were inside Thailand
- Non-Thais who live in Thailand less than three months prior to the Census Day
- **Refugees or illegal migrants who live in the refugee camps**

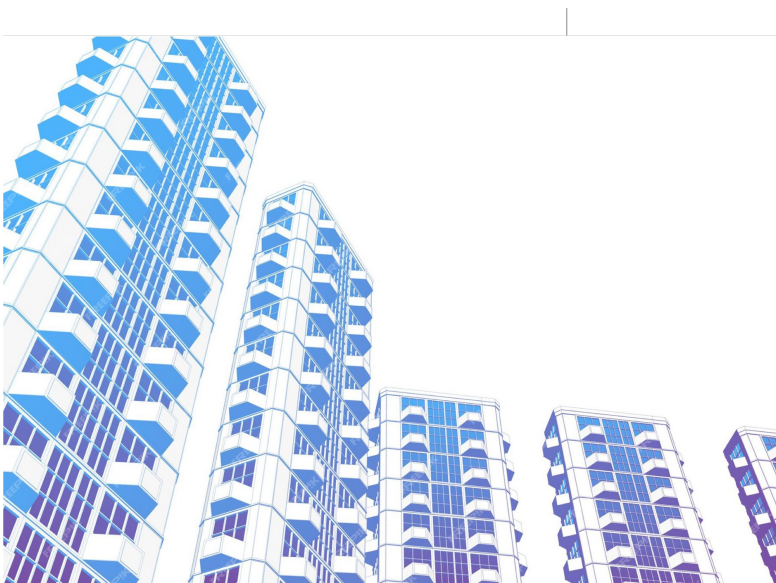
Challenges in population census data collection

Undocumented migrants

- Language diversity affecting communication and data collection
- Fear among undocumented migrants of detection or deportation affecting participation in data collection activities
- Addressing privacy concerns and ensuring data security
- Strategies for overcoming language barriers



Challenges in population census data collection



High-rise buildings and gated communities

- Challenges in accessing and enumerating residents in the building
- Issues with building and community security protocols, access restrictions, and privacy concerns
- Addressing cooperation from residents, obtaining permissions